

Landscape Product Overview

The right pieces for the puzzle

Seasons Landscape Collection



Seasons Landscape Collection

- Satellites
- Disguised as ground lights
 - LS44
 - 4" woofer
 - 1" tweeter
 - LS64
 - 6" woofer
 - 1" tweeter



Seasons Landscape Collection

- LS64
 - 6 ½-inch woofer
 - Aluminum tweeter
 - Passive Radiator
 - 8Ω / 70v
 - Switchable
 - Multi-taps



Seasons Landscape Collection

- Passive Radiators
 - Allows for more air to move, changing box tuning
 - Better bass response



Mounting Options

- Surface mounted
 - On deck
 - In trees
 - On walls
 - Under eaves



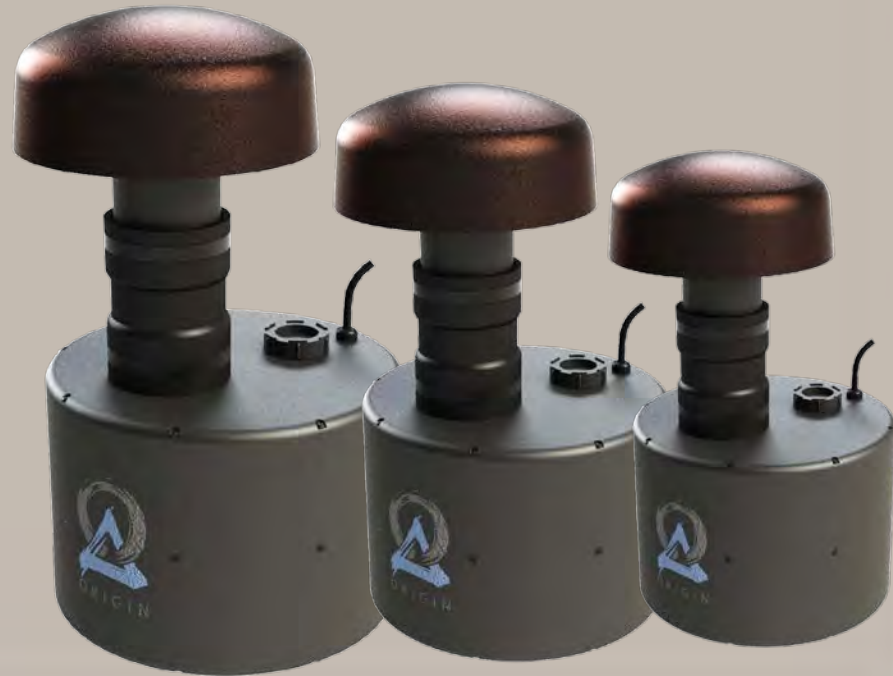
Mounting Options

- Staked into the ground
 - Flowerbeds
 - Planters
 - Lawn
 - In shrubbery
 - On hillsides
 - Under the deck



Seasons Landscape Collection

- In Ground Subwoofers
- Three models
 - OSUB8
 - 8" Woofer
 - OSUB10
 - 10" Woofer
 - OSUB12
 - 12" Woofer



Seasons Landscape Collection

- In Ground Subwoofers
 - Burial enclosure
 - Weather tight
 - Only port tube and cap are visible
 - Deep bass impact
 - Delivers emotional impact



Seasons Landscape Collection

- A lethal combination



Satellite and
subwoofer systems

More is Better

- Multiple speakers at lower volume
 - Creates a more impressive sonic experience
 - Spreads the sound to every listening location
 - Avoids hot spots and nulls
 - Allows for substantial sound levels when needed



Improved Technologies

- More and better products to address the outdoor environment
- All can be hidden in the current landscape
- Sound quality like nothing they have heard before



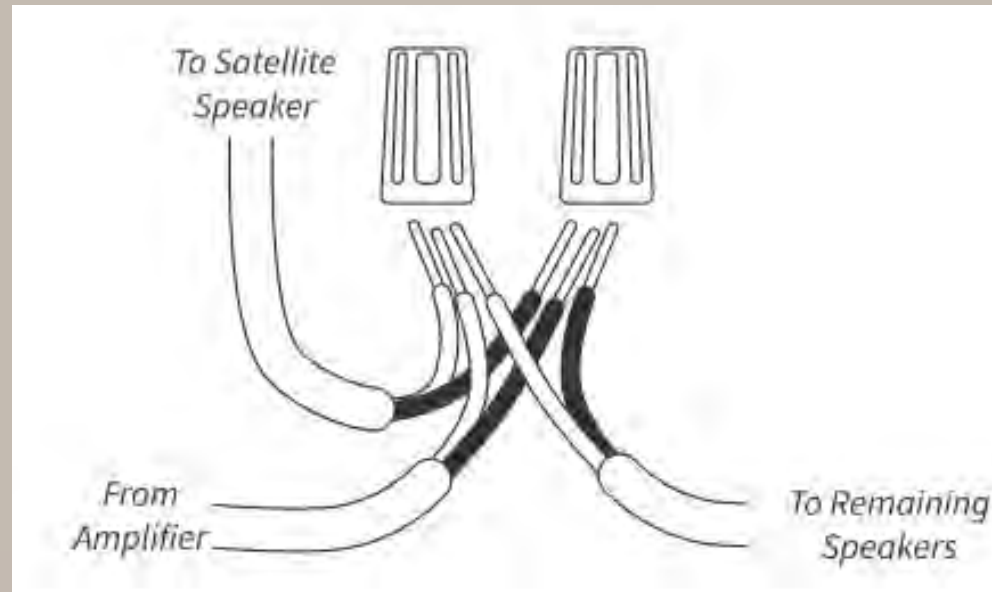
70 V vs. 8 ohm

- When to use and why?
- Use 70 V
 - Long wire runs
 - More than 2 pairs of speakers
 - Equal sound with EQ (huge advantage)
 - Individual VC for Sats and Subs
 - Stereo bass in subwoofer
 - Expandability (daisy chain)



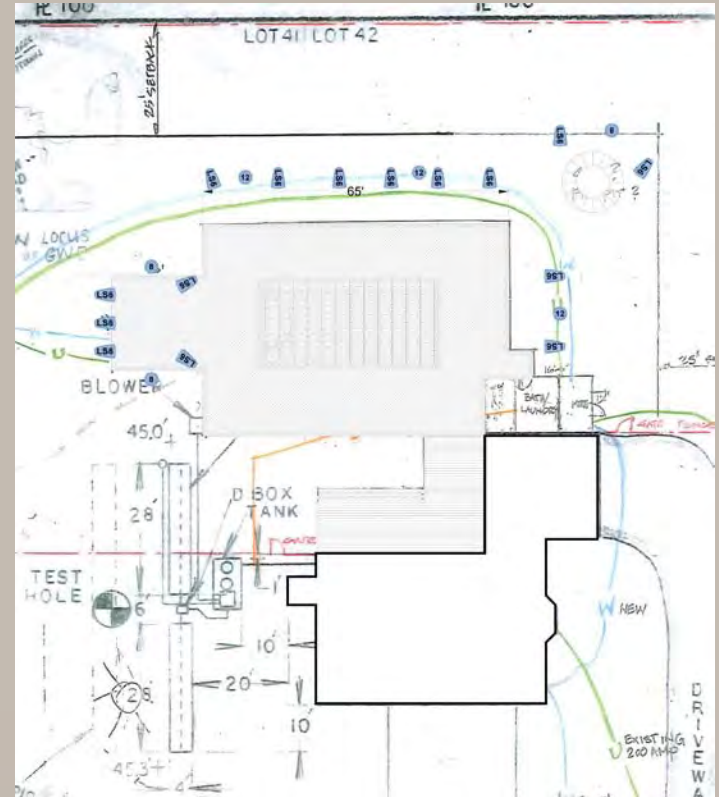
70 V Ease

Daisy Chain



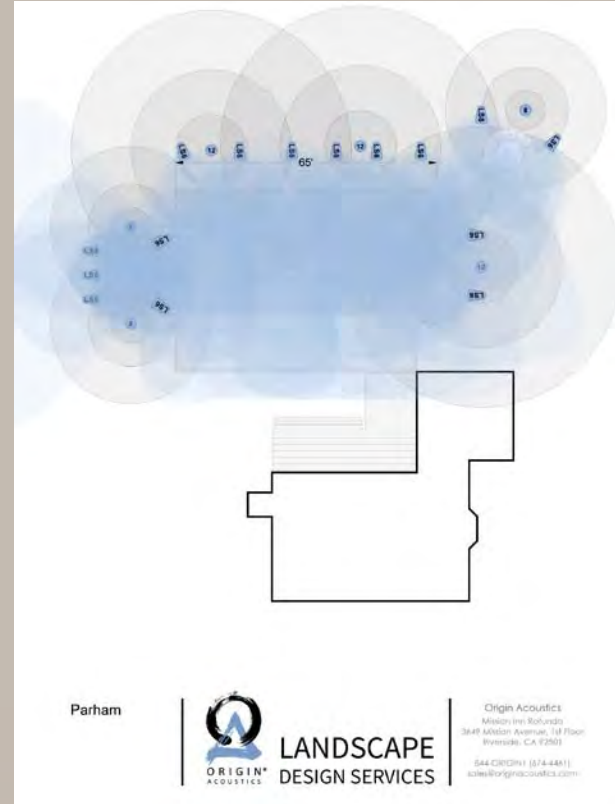
Origin Design Services

- Sample diagram submission from customer



Origin Design Services

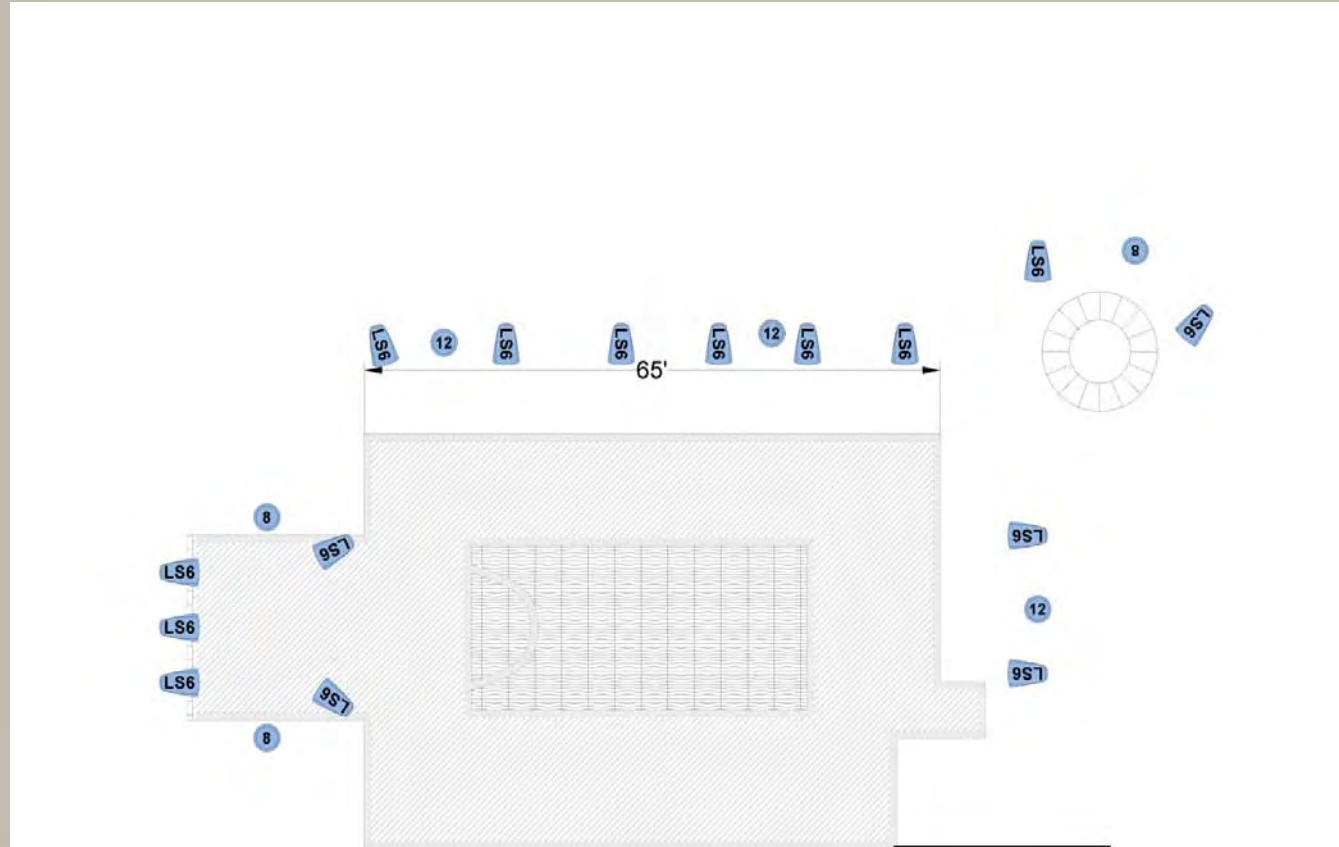
- Origin renders the same diagram with speaker recommendations
- Ideal placement determined by sound dispersion pattern



Origin Design Services



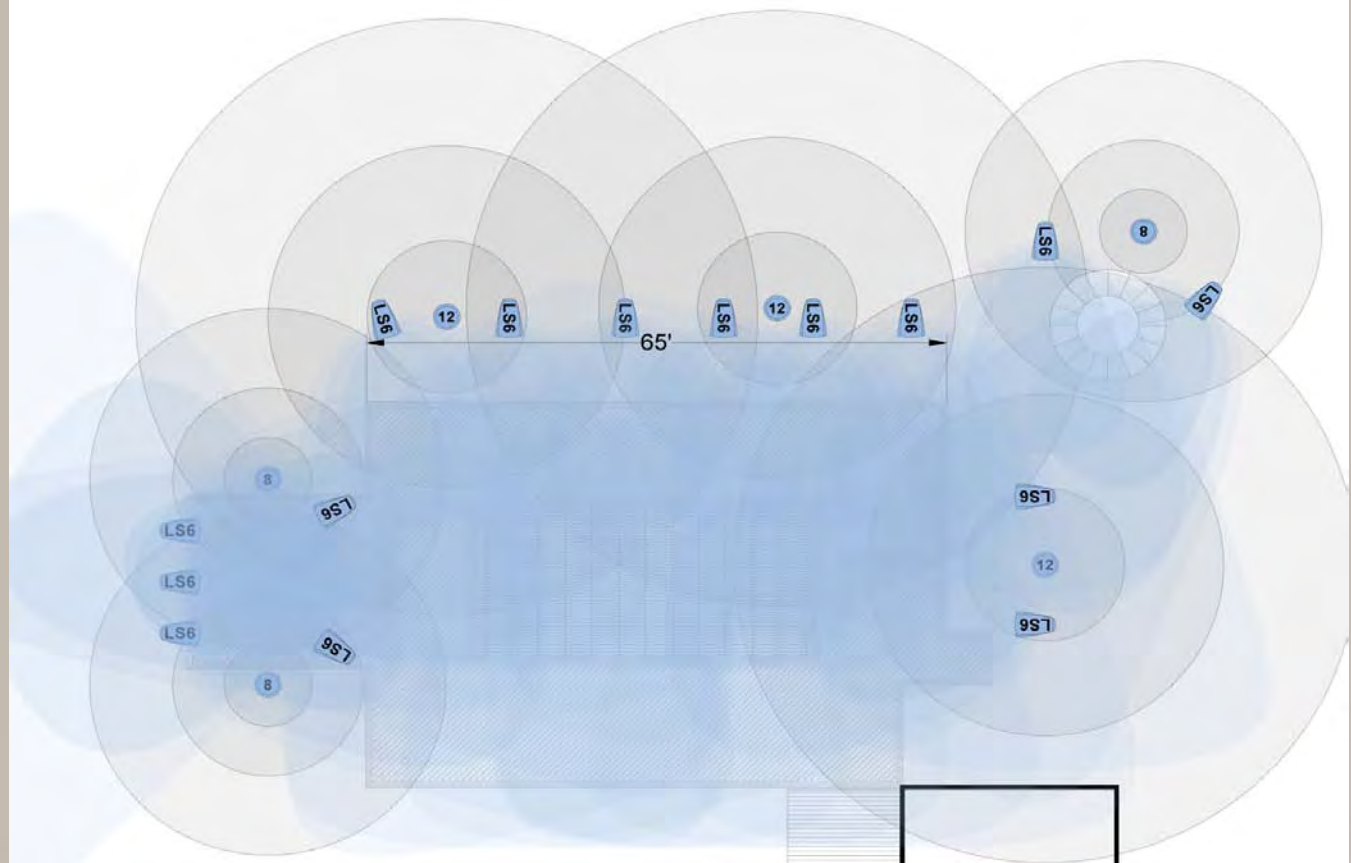
ORIGIN
ACOUSTICS



Origin Design Services



ORIGIN
ACOUSTICS



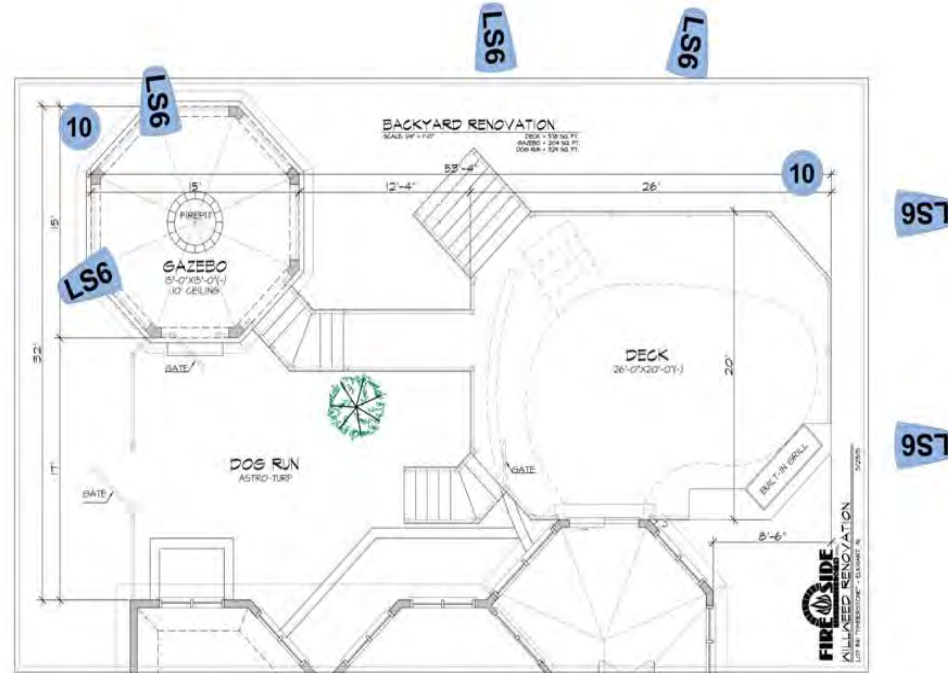


ORIGIN

DESIGN SERVICES

Exclusively Designed for Allegro

System Layout 1



Allegro

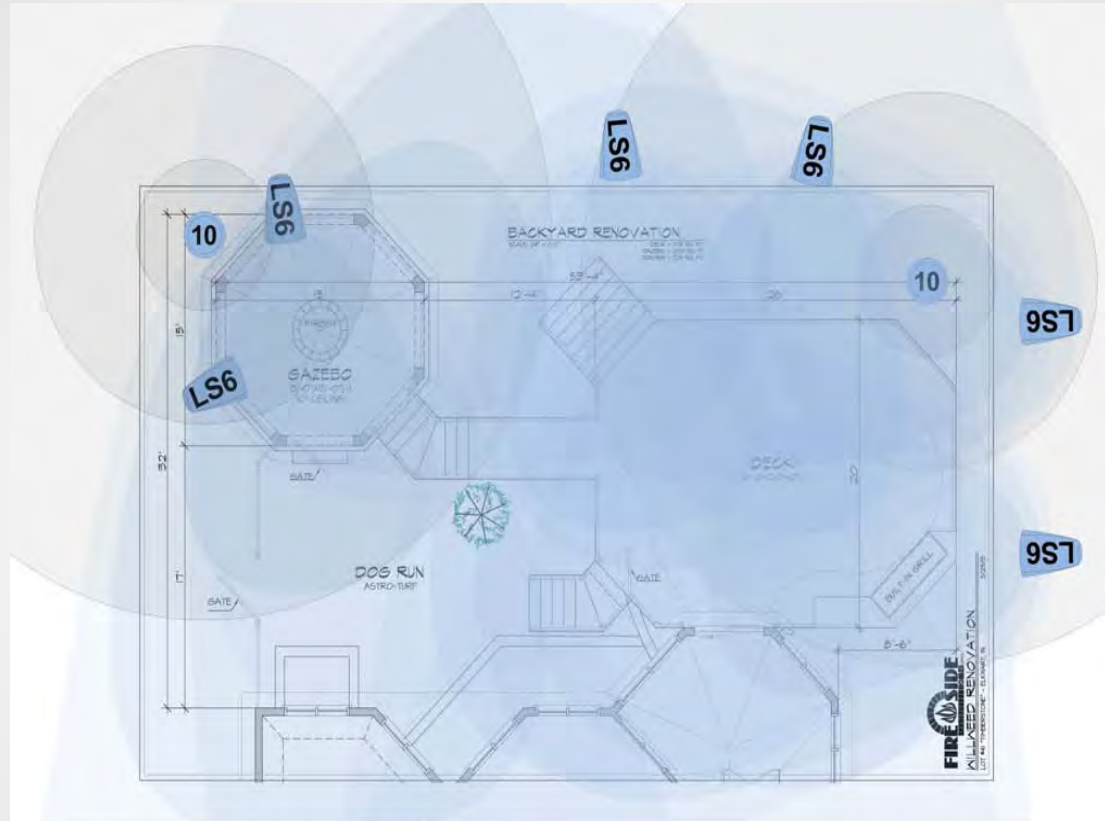


ORIGIN
DESIGN SERVICES

Origin Acoustics
Mission Inn Rotunda
3649 Mission Avenue, 1st Floor
Riverside, CA 92501

844-ORIGIN | (674-4461)
sales@originacoustics.com

Sound Dispersion



Allegro



ORIGIN
DESIGN SERVICES

Origin Acoustics
Mission Inn Rotunda
3649 Mission Avenue, 1st Floor
Riverside, CA 92501

844-ORIGIN | (674-4461)
sales@originacoustics.com

Quotation

Amp Model	Amp Channel Wiring		Zone	Speaker Model and Quantity		MSRP
				LS64	OSUB10	
CDi1000	Channel 1	Subwoofers	1		2	\$3,750
	Channel 2	Speakers	1	6		\$3,450
CDi1000 x1						\$1,175
Totals						\$8,375
Accessories				TBD. Stakes or Flush mount		

System explanation

Zone 1: Backyard deck, gazebo and grilling area will all be within zone 1. We've placed our best sounding LS64 satellite speakers in two separate seating areas, the deck and gazebo.

The Gazebo will utilize 2x LS64 satellites and 1x OSUB10 to completely cover that area in rich, detailed sound.

Depending on personal preference, and installation options, the LS64 satellites can either be mounted in ground using our LSLS mounting post, or up high in the gazebo using the LSFM mounts. The OSUB10 will need to be buried in ground close to the listening area.

The Deck will use 4x LS64 satellites and 1x OSUB10. Mounting the satellites can either be done in ground using the LSLS or on the railings or posts with the LSFM or LSTM mounts.

Amplification: Crown CDi1000 70v amplifier with custom Origin Acoustics DSP. For absolutely the best performance, use preset #12. AX10-64.

Wiring: Burial 14 guage, 2 conductor per channel. Both OSUB10 woofers on CH1 and all LS64 satellites on CH2.

Accessories: LSLS mounting spikes or LSFM/LSTM for Zone 1 satellites.

Summary and suggestions: Overall this system will be very flexible and easy to control with input source. My suggestion for sound would to run everything in Summed L/R from your source. This will give more even sound coverage for the larger outdoor areas. Additionally, a summed L/R signal for the subwoofer channels is important as well for even bass response and best performance. For even volume level from consumer grade source to the pro level amp, I suggest using a [conversion box](#) to sum L/R channels. For gain and connection to the CDi1000 use a [CleanboxPro](#) and [XLR to Phoenix cables](#).

